



EdgeSwitch[®] X

Gigabit Switches with PoE and SFP

Models: ES-10X, ES-10XP

Gigabit Ethernet RJ45 Ports

SFP Ports for Fiber Connectivity

Power over Ethernet Options



Optimized for WISP Deployments

Ubiquiti Networks introduces the EdgeSwitch® 10X and EdgeSwitch 10XP, our most affordable managed switches with SFP ports.

For the EdgeSwitch 10X, model ES-10X, eight Gigabit RJ45 ports offer copper connectivity with PoE input on port 1 and 24V PoE passthrough on port 8. Two SFP ports offer fiber connectivity.

For the EdgeSwitch 10XP, model ES-10XP, eight Gigabit RJ45 ports offer copper connectivity with 24V PoE output, while two SFP ports offer fiber connectivity.

Switching Performance

Delivering top price/performance value, the EdgeSwitch offers the forwarding capacity to simultaneously process traffic on all ports at line rate without any packet loss, as well as an extensive suite of advanced Layer 2 switching features and protocols.

For its total, non-blocking throughput, the EdgeSwitch supports up to 10 Gbps.

Fiber Connectivity

The EdgeSwitch includes two SFP ports, providing up to 1 Gbps uplinks.

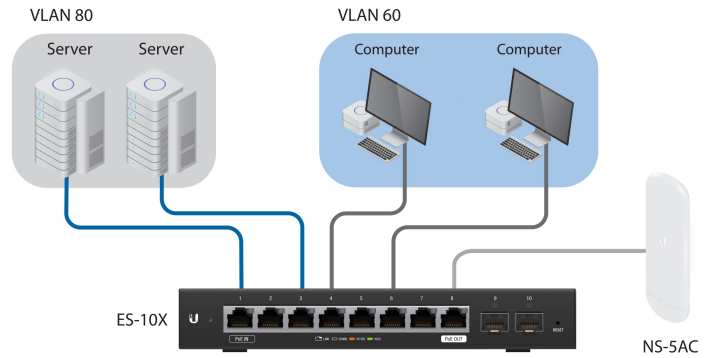
PoE Flexibility

To simplify your infrastructure, the EdgeSwitch 10XP offers configurable 24V passive PoE on all RJ45 ports, while the EdgeSwitch 10X offers configurable 24V PoE passthrough on port 8.

Easy Management

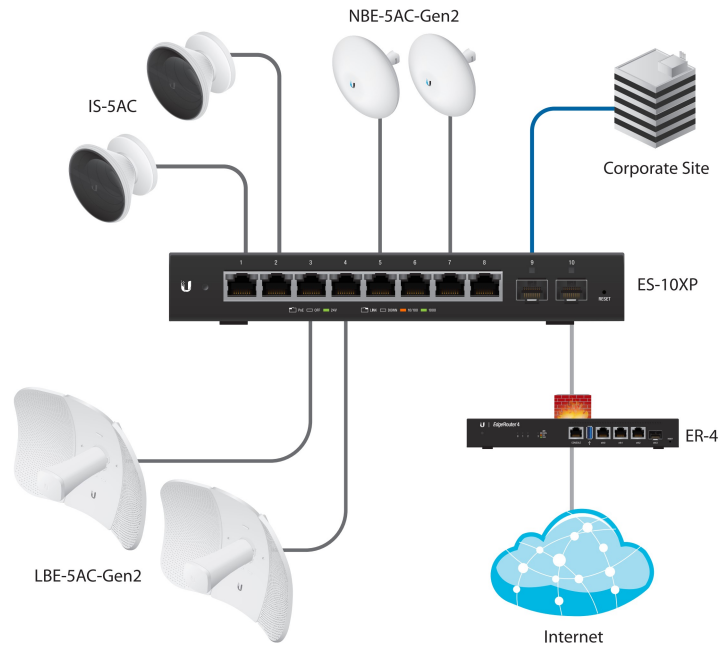
The browser-based configuration interface offers intuitive control using a redesigned UI. Management is also available through the Ubiquiti® Network Management System (UNMS™), which is a comprehensive management controller featuring an easy-to-use UI. You can use a single control plane to manage registered EdgeMAX® devices across multiple networks and sites.

Deployment Examples



VLANs for Servers and Computers

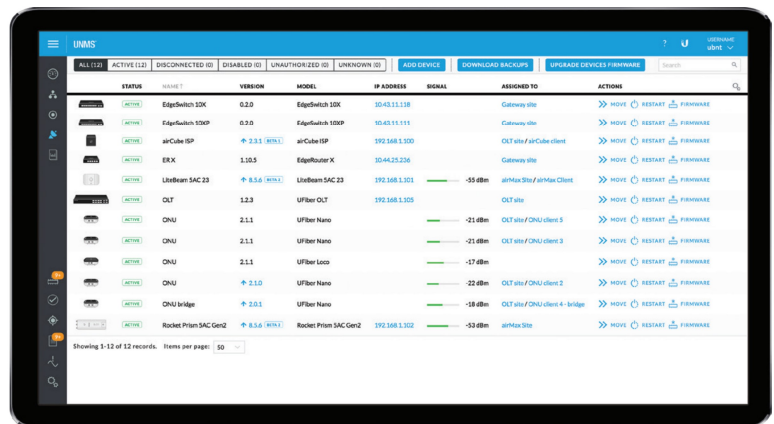
The EdgeSwitch 10X powers the NanoStation® 5AC, an airMAX® AC CPE functioning in router mode.



Power over Ethernet Switching

The EdgeSwitch 10XP powers a variety of airMAX AC CPEs: the IsoStation™ 5AC, LiteBeam® 5AC Gen2, and NanoBeam® 5AC Gen2. Its SFP ports connect to the EdgeRouter™ 4 and an off-site network.

Ubiquiti Network Management System



Use UNMS to register and manage multiple EdgeMAX devices.

Comprehensive User Interface

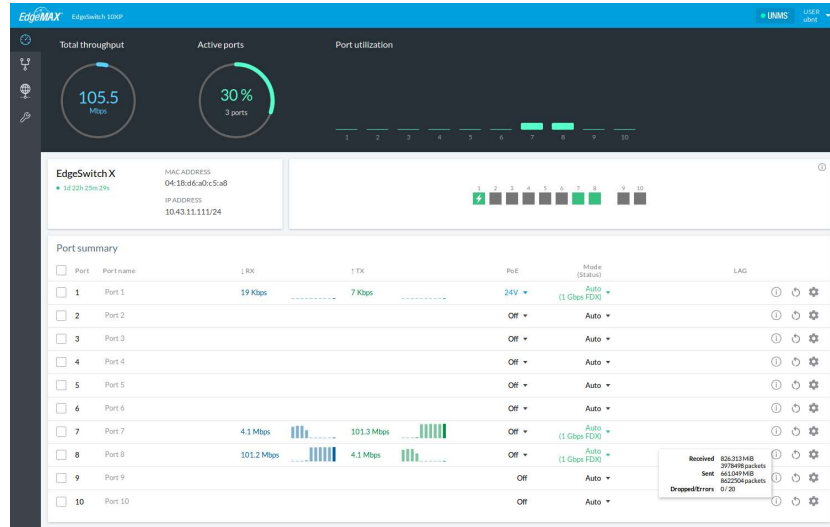
Sporting an updated design for an improved user experience, the EdgeSwitch Configuration Interface allows you to configure and monitor switch features in a graphical user interface. It offers intuitive management with a virtual view of the ports, showing physical connectivity, speed, and PoE status.

Advanced Features

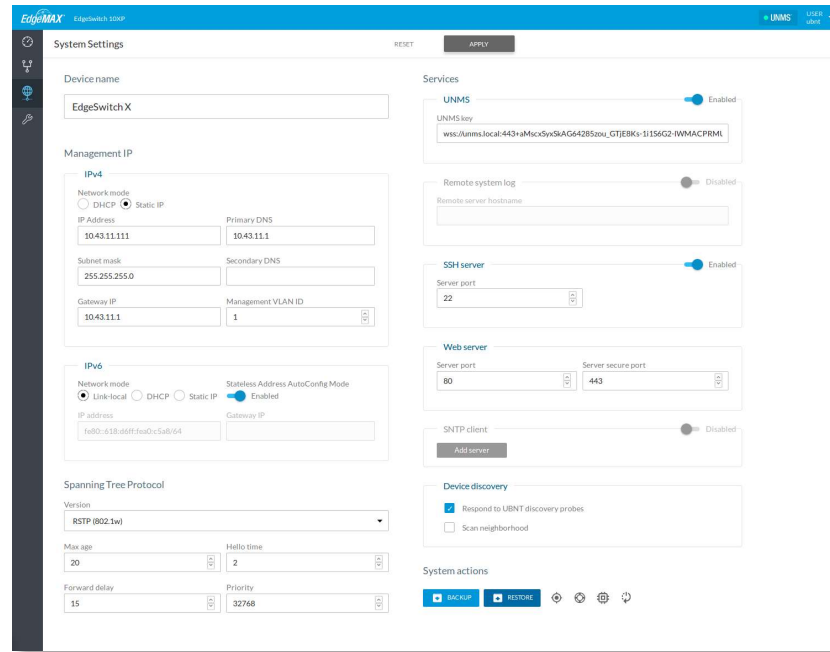
The EdgeSwitch provides a variety of advanced features, including:

- Port Monitoring
- Virtual Local Area Network (VLAN) Configuration
- Spanning Tree Protocol (STP, MSTP, and RSTP)
- Device Discovery Tool
- Jumbo Frame Support
- DHCP Snooping
- Port Isolation
- Ping Watchdog

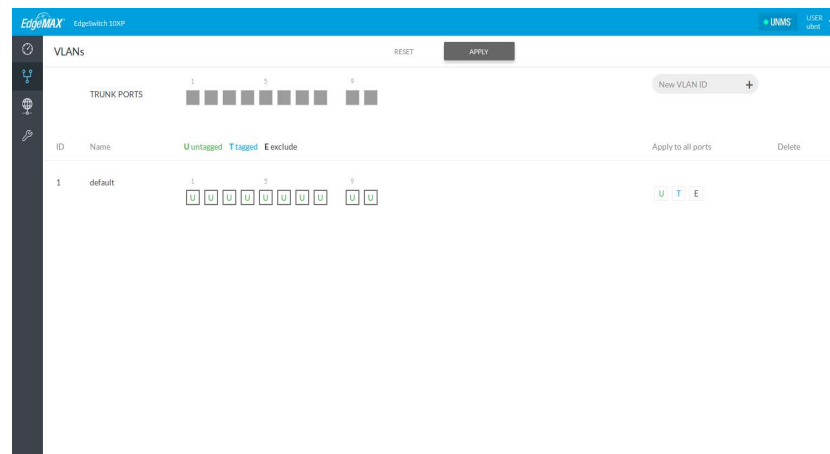
EdgeSwitch Configuration Interface



The Dashboard screen shows system and port status information.



Configure system settings and services.



Create VLANs and configure VLAN settings.

Models

EdgeSwitch 10X

Model: ES-10X

- (8) Gigabit RJ45 Ports
- (2) SFP Ports
- Non-Blocking Throughput: 10 Gbps
- Switching Capacity: 20 Gbps
- Forwarding Rate: 14.88 Mpps
- Supports PoE Input on Port 1
- Software-selectable PoE Passthrough on Port 8
- Powered by 24V Passive PoE or External AC/DC Adapter
- DC Jack Supports Battery Backup with EdgePower™ (sold separately)
- Wall- or Rack-Mountable*



Front Panel



Back Panel

EdgeSwitch 10XP

Model: ES-10XP

- (8) Gigabit RJ45 Ports
- (2) SFP Ports
- Non-Blocking Throughput: 10 Gbps
- Switching Capacity: 20 Gbps
- Forwarding Rate: 14.88 Mpps
- Supports 24V Passive PoE Output on All RJ45 Ports
- Powered by External AC/DC Adapter
- DC Jack Supports Battery Backup with EdgePower (sold separately)
- Wall- or Rack-Mountable*



Front Panel



Back Panel

* Use the optional ER-RMKIT for rack-mounting.

EdgeRouter Rackmount Kit

Model: ER-RMKIT

The EdgeRouter Rackmount Kit is an optional accessory. Its mounting bracket adjusts to the width of the EdgeSwitch 10X or 10XP.



EdgeSwitch® 10X

Hardware Specifications

ES-10X	
Dimensions	207 x 31.1 x 90 mm (8.15 x 1.22 x 3.54")
Weight	500 g (1.10 lb)
Total Non-Blocking Throughput	10 Gbps
Switching Capacity	20 Gbps
Forwarding Rate	14.88 Mpps
Max. Power Consumption (Excluding PoE Output)	8W
Power Method	24VDC, 1A or 24V Passive PoE
Supported Voltage Range	9 - 30VDC
Power Supply	24VDC, 1A Power Adapter (Included) or 24V Passive PoE
LEDs Per Port System RJ45 Data Ports SFP Data Ports	Status Link/Speed/Activity Link/Activity
Networking Interfaces	(8) 10/100/1000 Mbps RJ45 Ports (2) 1 Gbps SFP Ports
Management Interface	Ethernet In-Band
Certifications	CE, FCC, IC
Rackmount	Yes*
ESD/EMP Protection	Air: ±24 kV, Contact: ±24 kV
Operating Temperature	-10 to 50° C (14 to 122° F)
Operating Humidity	5 to 95% Noncondensing
Shock and Vibration	ETSI300-019-1.4 Standard

* Use the optional ER-RMKIT for rackmounting.

PoE (Port 8)	
PoE Interface	24VDC Passive PoE (Pins 4, 5+; 7, 8-)
Max. Passive PoE Wattage per Port	15W
24V Passive PoE Voltage Range	24V

EdgeSwitch[®] 10XP

Hardware Specifications

ES-10XP	
Dimensions	207 x 31.1 x 90 mm (8.15 x 1.22 x 3.54")
Weight	500 g (1.10 lb)
Total Non-Blocking Throughput	10 Gbps
Switching Capacity	20 Gbps
Forwarding Rate	14.88 Mpps
Max. Power Consumption (Excluding PoE Output)	8W
Power Method	24VDC, 2.5A
Supported Voltage Range	9 - 30VDC, 5A
Power Supply	24VDC, 2.5A Power Adapter (Included)
LEDs Per Port	
System	Status
RJ45 Data Ports	PoE, Speed/Link/Activity
SFP Data Ports	Link/Activity
Networking Interfaces	(8) 10/100/1000 Mbps RJ45 Ports (2) 1 Gbps SFP Ports
Management Interface	Ethernet In-Band
Certifications	CE, FCC, IC
Rackmount	Yes*
ESD/EMP Protection	Air: ±24 kV, Contact: ±24 kV
Operating Temperature	-10 to 50° C (14 to 122° F)
Operating Humidity	5 to 95% Noncondensing
Shock and Vibration	ETSI300-019-1.4 Standard

* Use the optional ER-RMKIT for rackmounting.

PoE	
PoE Interface	(8) 24VDC Passive PoE (Pins 4, 5+; 7, 8-)
Max. Passive PoE Wattage per Port	15W
24V Passive PoE Voltage Range	24V

Specifications are subject to change. Ubiquiti products are sold with a limited warranty described at: www.ubnt.com/support/warranty
 ©2018 Ubiquiti Networks, Inc. All rights reserved. Ubiquiti, Ubiquiti Networks, the Ubiquiti U logo, the Ubiquiti beam logo, airMAX, airOS, EdgeMAX, EdgePower, EdgeRouter, EdgeSwitch, IsoStation, LiteBeam, NanoBeam, NanoStation, and UNMS are trademarks or registered trademarks of Ubiquiti Networks, Inc. in the United States and in other countries. Apple and the Apple logo are trademarks of Apple Inc., registered in the U.S. and other countries. App Store is a service mark of Apple, Inc., registered in the U.S. and other countries. Android, Google, Google Play, the Google Play logo and other marks are trademarks of Google Inc. All other trademarks are the property of their respective owners.



www.ubnt.com